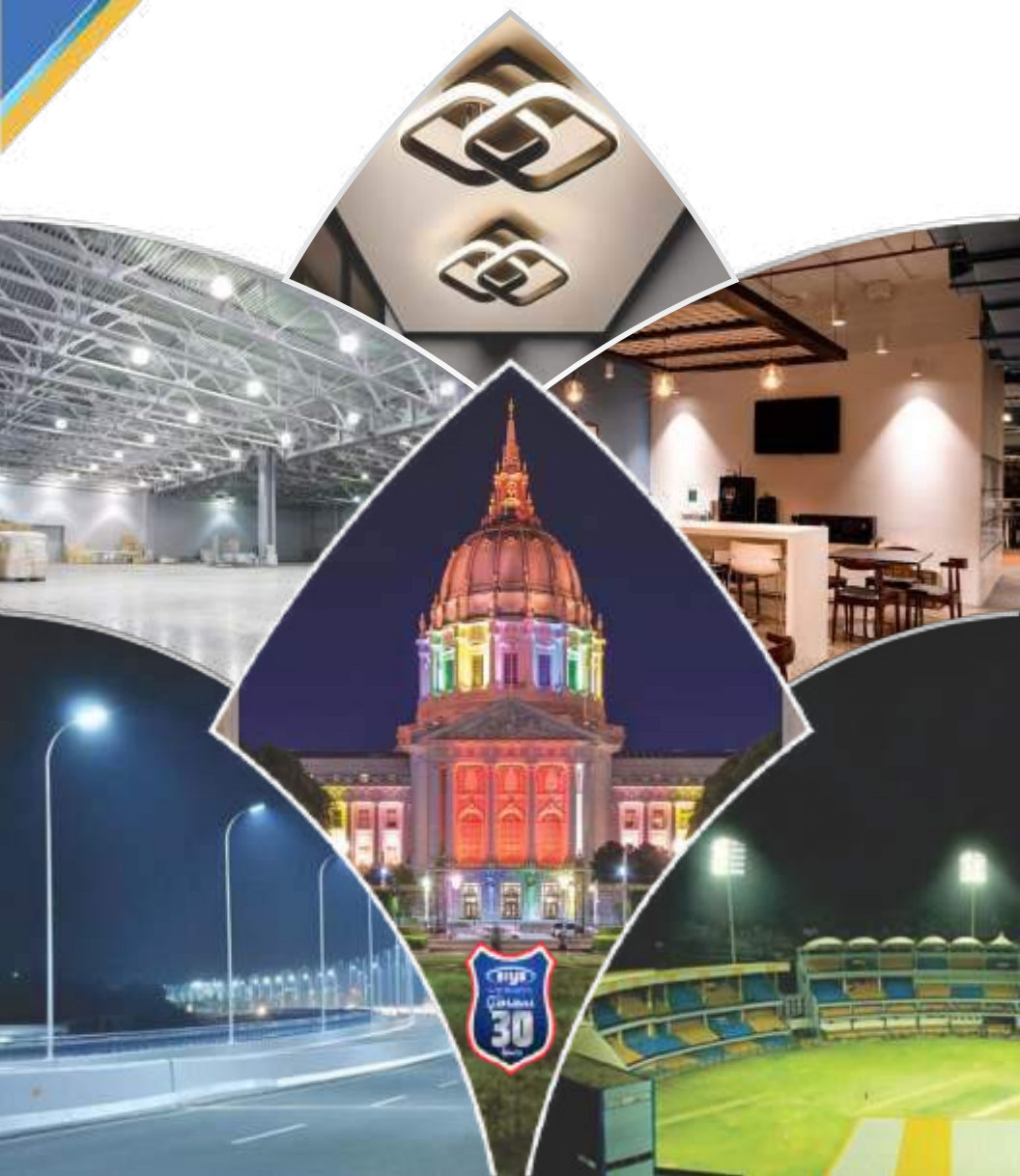




*Add Light to Life*

# BROCHURE

2024



# ABOUT US

**Arya Newtech Pvt Ltd** is an ISO 9001:2015 quality certified company dedicated to the design and manufacturing of "ARYA" branded LED indoor and outdoor lights. Our cutting-edge manufacturing facility is situated in the Pithampur Industrial hub within the Dhar district of Madhya Pradesh, India.

## **Our Commitment to Quality**

At Arya Newtech, our foundation is rooted in the philosophy that customer satisfaction and cost-effectiveness are pivotal. Therefore, we prioritize consistency in high quality by meticulously controlling the design and manufacture of critical components, including electronic drivers and optical lenses. Our products undergo rigorous testing for extreme temperature and humidity conditions, ensuring reliability in all operational environments.

## **Our Motto: Durability and Energy Efficiency**

Our primary goal is to engineer Arya make luminaries that can withstand extreme power supply conditions such as overvoltage and surges while requiring minimal to no servicing. This approach keeps energy consumption and associated costs as low as possible.

## **Our Diverse Product Line**

We specialize in a comprehensive range of application-based lighting solutions, covering various sectors including domestic lighting, office lighting, street and flood lights for outdoor applications, industrial lighting (well glass, highbay fittings, search lights for security purposes), hand lamps for confined space applications during shutdown, rechargeable floodlights, landscape lighting, and solar-based street lights.

## **Our Responsibility and Vision**

Arya Newtech pledges to continue its journey by adhering to all applicable laws and regulations that govern our business operations. We are committed to creating a safe workplace and prioritizing environmental protection.

At Arya Newtech, we are dedicated to innovating and delivering exceptional lighting solutions, ensuring durability, energy efficiency, and a commitment to regulatory compliance and environmental responsibility.



# INDEX

PAGE	ITEM NAME	IMAGES
1-4	Lamps	
5-18	Panel & Down Lights	
19-23	Profile Lights	
24-31	Street Lights	
32-34	Solar Lights	
35-46	Flood Lights	
47-52	Highbay Lights	
53-68	Industrial Lights	
69-75	Battery Operated Lights	
76-85	Landscape Lights	
86-91	Spare Parts	



*Add Light to Life*

# LED PANEL LIGHT







ARYA LED Lamps are today's most energy-efficient and rapidly-developing lighting technology. Quality LED light bulbs last longer, are more durable, and offer comparable or better light quality than other types of lighting.

Lamps are available in B22d & E-27cap also.

#### APPLICATIONS



## LED LAMP

### TECHNICAL DATA

Cat. Ref.	Wattage	Voltage	Lumens	Colour Temp	THD	CRI	MRP
ANLLW3	3	90-300	>360	3000-6000	<20	>70	140
ANLLW5	5	90-300	>600	3000-6000	<20	>70	140
ANLLW7	7	90-300	>840	3000-6000	<20	>70	145
ANLLW9	9	90-300	>1080	3000-6000	<20	>70	160
ANLLW10	10	90-300	>1200	3000-6000	<20	>70	160
ANLLW12	12	90-300	>1440	3000-6000	<20	>70	160
ANLLW15	15	90-300	>1800	3000-6000	<20	>70	265
ANLLW16	16	90-300	>2160	3000-6000	<20	>70	340
							499





ARYA LED Lamps are today's most energy-efficient and rapidly-developing lighting technology. Quality LED light bulbs last longer, are more durable, and offer comparable or better light quality than other types of lighting.

Lamps are available in E27 & E-27 cap also.

## LED LAMP

### APPLICATIONS



### TECHNICAL DATA

Cat. Ref.	Wattage	Voltage	Lumens	Colour Temp	THD	CRI	MRP
ANLLW20	20	90-300	>2400	3000-6000	<15	>70	499
ANLLW24	24	90-300	>2880	3000-6000	<15	>70	599
ANLLW27	27	90-300	>3240	3000-6000	<15	>70	649
ANLLW30	30	90-300	>3600	3000-6000	<15	>70	649





ARYA LED Lamps are today's most energy-efficient and rapidly-developing lighting technology. Quality LED light bulbs last longer, are more durable, and offer comparable or better light quality than other types of lighting. Lamps are available in B22d & E-27cap also.

## LED LAMP

### APPLICATIONS



### TECHNICAL DATA

Cat. Ref.	Wattage	Voltage	Lumens	Colour Temp	THD	CRI	MRP
ANLLW40	40	90-300	>4800	3000-6000	<10	>70	859
ANLLW45	45	90-300	>5400	3000-6000	<10	>70	999
ANLLW50	50	90-300	>6000	3000-6000	<10	>70	999





## ROTO

LED Spot Light specifically designed for commercial and industrial usage long life with more than 25000 burning hrs. with CRI >75 , Available in wide range from 3 to 12w with beam angle from 20 degree to 60 degree. Vertical tilt up to 30 degree.

## SPOT LIGHT

### CONCEALED

#### APPLICATIONS



#### TECHNICAL DATA

Cat. Ref.	Watt	Dimension	Depth	Cutout Size	Colour	Std. Pack	MRP
ANPLW3-SPT-ROTO	3	75 mm	45 mm	55 mm	CW/WW/R/G/B/P	150	900
ANPLW6-SPT-ROTO	6	95 mm	50 mm	72 mm	CW/WW/R/G/B/P	70	1800
ANPLW9-SPT-ROTO	9	115 mm	55 mm	90 mm	CW/WW/R/G/B/P	50	2700
ANPLW12-SPT-ROTO	12	140 mm	60 mm	115 mm	CW/WW/R/G/B/P	50	3600







## ROTO-M



LED Spot Light specifically designed for commercial and industrial usage long life with more than 25000 burning hrs. with CRI >75. Available in wide range from 9 to 30w with beam angle from 20 degree to 60 degree. Vertical tilt up to 30 degree.

## SPOT LIGHT

CONCEALED

### APPLICATIONS



### TECHNICAL DATA

Cat. Ref.	Watt	Dimension	Depth	Cutout Size	Colour	Std. Pack	MRP
ANPLW9-SPT-ROTO-M	9	75 mm	45 mm	55 mm	CW/WW/R/G/B/P	150	2700
ANPLW16-SPT-ROTO-M	16	95 mm	50 mm	72 mm	CW/WW/R/G/B/P	70	4800
ANPLW24-SPT-ROTO-M	24	115 mm	55 mm	90 mm	CW/WW/R/G/B/P	50	7200
ANPLW30-SPT-ROTO-M	30	140 mm	60 mm	115 mm	CW/WW/R/G/B/P	50	9000





## SPOTON-M

LED Deep Junction Light specifically designed for commercial and industrial usage long life with more than 25000 burning hrs. with CRI >75. Available in wide range from 6 to 30w with beam angle up to 90 degree.

## SPOT LIGHT

CONCEALED

### APPLICATIONS



### TECHNICAL DATA

Cat. Ref.	Watt	Dimension	Depth	Cutout Size	Colour	Std. Pack	MRP
ANPLW6-SPT-ROTO-MD	6	51 mm	62 mm	60 mm	CW/WW/R/G/B/P	150	1800
ANPLW9-SPT-ROTO-MD	9	75 mm	65 mm	85 mm	CW/WW/R/G/B/P	150	2700
ANPLW15-SPT-ROTO-MD	15	75 mm	80 mm	85 mm	CW/WW/R/G/B/P	150	4500
ANPLW20-SPT-ROTO-MD	20	90 mm	80 mm	85 mm	CW/WW/R/G/B/P	20	6000
ANPLW30-SPT-ROTO-MD	30	115 mm	120 mm	130 mm	CW/WW/R/G/B/P	20	9000





## SPOTON

LED Spot Light specifically designed for domestic, commercial and industrial furnitures usage long life with more than 25000 burning hrs. with CRI >75. Available in wide range from 2 to 3w with beam angle 120 degree.

### SPOTON TYPE

DEEP JUNCTION

#### APPLICATIONS



#### TECHNICAL DATA

Cat. Ref.	Watt	Dimension	Depth	Cutout Size	Colour	Std. Pack	MRP
ANPLW3-SPT-ECO	3	70 mm	45 mm	50 mm	CW/WW/R/G/B/P	150	900
ANPLW5-SPT-ECO	5	70 mm	45 mm	50 mm	CW/WW/R/G/B/P	150	1500





## SPOTON-Gold

LED Spot Light specifically designed for domestic, commercial malls & offices usage long life with more than 25000 burning hrs. with CRI >75. Available in wide range from 5 to 18w with beam angle 120 degree.

### SPOT LIGHT

DEEP JUNCTION

#### APPLICATIONS



#### TECHNICAL DATA

Cat. Ref.	Watt	Dimension	Depth	Cutout Size	Colour	Std. Pack	MRP
ANPLWS-SPT-GOLD	5	75 mm	62 mm	85 mm	CW/WW/R/G/B/P	10	1500
ANPLW12-SPT-GOLD	12	75 mm	80 mm	85 mm	CW/WW/R/G/B/P	10	3600
ANPLW18-SPT-GOLD	18	90 mm	92 mm	100 mm	CW/WW/R/G/B/P	10	5400







## SPOTON-Cylinder

LED Spot Light specifically designed for domestic, commercial malls, showrooms and industrial usage long life with more than 25000 burning hrs. with CRI >75. Available in wide range from 6 to 18W with beam angle 120 degree.

### SPOT LIGHT

SURFACE

#### APPLICATIONS



#### TECHNICAL DATA

Cat. Ref.	Wattage	Dimension	Colour	Std. Pack	MRP
ANPLW6-SPT-CY	6	75 mm	CW/WW/R/G/B/P	10	1800
ANPLW12-SPT-CY	12	75 mm	CW/WW/R/G/B/P	10	3600
ANPLW18-SPT-CY	18	90 mm	CW/WW/R/G/B/P	10	5400





## PEARL- Surface



Made of PVC body with PC diffuser with high performance LED & Drivers. Available in colour - RGB and warm white & natural cool white.

## SURFACE PANEL

### APPLICATIONS



### TECHNICAL DATA

Cat. Ref.	Wattage	Dimension	Thickness	Colour	Std. Pack	MRP
ANPLWB-PRL-SP	8	92 mm	40 mm	CW/WW/R/G/B/P	60	2400
ANPLWIS-PRL-SP	15	140 mm	40 mm	CW/WW/R/G/B/P	55	4500
ANPLWIS-PRL-SP-2	15	140 mm	40 mm	2 in 1 Color	55	4600
ANPLWIS-PRL-SP-3	15	140 mm	40 mm	3 in 1 Color	55	4600





## TRACK LIGHT

### SURFACE

Magnetic track light is a low voltage track with the aluminum housing. No tools are required, as adapters of the light fixture are installed using magnets, which gives you the flexibility to combine them in a variety of ways, then powered by an AC90-300V.

It can be flexibly matched with different types and quantities of track lights according to various requirements. If the power is allowed, it can be arbitrarily spliced to the track for use. A magnet track can support different led lights, so it can be used in a wider range of applications.

Track lighting systems offer a versatile and stylish approach to illuminating spaces. The three main types of track lighting include linear, monorail, and cable.

### APPLICATIONS



### TECHNICAL DATA

Cat. Ref.	Watt	Body Finish	Colour
ANTL1-W8/12/15	8/12/15	Black & White	CW/WW
ANTL2-W10/20/30	10/20/30	Black & White	CW/WW
ANTL3-W12/22/45	12/22/45	Black & White	CW/WW





## PANEL LIGHT

LED Panel Light specifically designed for domestic, commercial malls, showrooms and industrial usage long life with more than 25000 burning hrs. with CRI >75. Available in wide range from 9 to 20w with beam angle 120 degree.

Available in recess mounting and surface mounting.

## PANEL – RUBY

LED DOWN LIGHT

### APPLICATIONS



### TECHNICAL DATA

Cat. Ref.	Wattage	Voltage	Lumens	Colour Temp	THD	CRI	MRP
ANPSW09	9	90-300	>1080	3000-6000	<10	>70	2700
ANPSW15	15	90-300	>1800	3000-6000	<10	>70	4500
ANPSW20	20	90-300	>2400	3000-6000	<10	>70	6000







## RUBBY - STD

Made of PDC aluminium body with PC diffuser with high performance LED & Drivers. Available in warm white and natural cool white.  
Available in Round and Square shape.

### APPLICATIONS



### TECHNICAL DATA

Cat. Ref.	Watt	Dimension	Depth	Cutout Size	Colour	Std. Pack	MRP
ANPSW9-STD	9w	115 mm	25 mm	100 mm	CW/WW/R/G/B/P	70	2700
ANPSW15-STD-1	15w	140 mm	25 mm	125 mm	CW/WW/R/G/B/P	70	4500
ANPSW15-STD-2	15w	165 mm	25 mm	150 mm	CW/WW/R/G/B/P	70	4500
ANPSW20-STD	20w	220 mm	25 mm	205 mm	CW/WW/R/G/B/P	70	6000





## ULTRA SLIM PANEL



Made of PDC aluminium body with PC diffuser with high performance LED & Drivers. Available in warm white and natural cool white.  
Available in Round and Square shape.

### APPLICATIONS



### TECHNICAL DATA

Cat. Ref.	Watt	Dimension	Depth	Cutout Size	Colour	Std. Pack	MRP
ANPSW9-ULT	9w	115 mm	20 mm	100 mm	CW/WW/NW	100	2700
ANPSW12-ULT	12w	140 mm	20 mm	127 mm	CW/WW/NW	50	4500
ANPSW15-ULT	15w	165 mm	20 mm	150 mm	CW/WW/NW	50	4500
ANPSW20-ULT	20w	220 mm	20 mm	205 mm	CW/WW/NW	50	6000





## PEARL

Made of PVC body with PC diffuser with high performance LED & Drivers. Available in colour - RGB and warm white & natural cool white.

## DEEP JUNCTION

DEEP JUNCTION

### APPLICATIONS



### TECHNICAL DATA

Cat. Ref.	Wattage	Dimension	Depth	Cutout	Colour	Std. Pack	MRP
ANPW9-PRL-DEEP	3w Single	80 mm	45 mm	50 mm	CW/WW/R/G/B/P	120	900
ANPW333-PRL-DEEP	3w-Multi 3 in 1	80 mm	45 mm	50 mm	RBP/PGWW/CW/WW	120	900
ANPW6-PRL-DEEP	6w	84 mm	45 mm	50 mm	CW/WW/R/G/B/P	84	1800
ANPW15-PRL-DEEP	15w	140 mm	45 mm	50 mm	CW/WW/R/G/B/P	30	4500





## NEO PLUS



Made of PVC body with PC diffuser with high performance LED & Drivers. Available in colour - RGB and warm white & natural cool white.

Available in single color and 2 in 1 also.

### APPLICATIONS



### TECHNICAL DATA

Cat. Ref.	Wattage	Dimension	Depth	Cutout Size	Colour	Std. Pack	MRP
ANPLW33-NEO	3w+3w	100x100 mm	10 mm	75 mm	All with CW	70	1800
ANPLW66-NEO	6w+6w	140x140 mm	10 mm	100 mm	All with CW	50	2700
ANPLW124-NEO	12w+4w	190x190 mm	10 mm	150 mm	All with CW	50	4500







## PANEL LIGHT

LED Panel Light specifically designed for domestic, commercial malls, showrooms and industrial usage long life with more than 25000 burning hrs. with CRI >75. Available in wide range from 20 to 40w with beam angle 120 degree.



### APPLICATIONS



### TECHNICAL DATA

Cat. Ref.	Wattage	Dimension	Depth	Cutout Size	Colour	MRP
ANPLW20-1x1	20w	300x300 MM	35 mm	270x270 mm	CW/WW	4500
ANPLW20-1x2	20w	300x600 MM	35 mm	270x570 mm	CW/WW	4500
ANPLW36-2x2	36w	600x600 MM	35 mm	570x570 mm	CW/WW	6500
ANPLW36-1x4	36w	300x1200 MM	35 mm	270x1170 mm	CW/WW	6500
ANPLW40-2x2	40w	600x600 MM	35 mm	570x570 mm	CW/WW	6800
ANPLW40-1x4	40w	300x1200 MM	35 mm	270x1170 mm	CW/WW	6800





## LINEAR PROFILE LIGHT

Arya is engaged with manufacturing of Aluminium Linear Profiles also. We supply high quality aluminium extruded profiles at competitive prices to variety of customers in different segments. With very talented administrator and specialised group, we give convenient conveyance and making a climate of constant updating of products.

We additionally offer the total solutions from product development to successful production of aluminium profiles as well as pipes. We have adequate infrastructure for die designing and developing for critical engineering and commodity aluminium.

We also welcome the inquiries for polymer extrusion and plastic accessories.

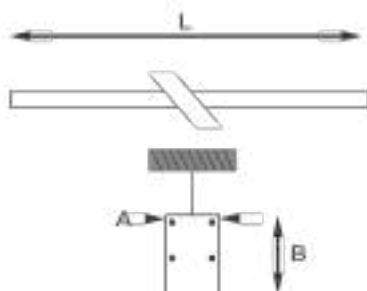
### Different Size Available on Customized Requirement Also.

18x6 Conciled  
 18x6 Conciled-PC  
 12x6 Conciled  
 7x9 Conciled  
 10x12 Conciled

16x12 Conciled  
 16x16 Corner Surface  
 16 mm Round  
 23x9 Conciled  
 17x14 Conciled

25x12 Conciled  
 25x25 Conciled  
 32x32 Conciled  
 35x12 Conciled  
 35x35 Conciled

50x35 Conciled  
 50x12 Conciled  
 75x35 Conciled  
 100x35 Conciled  
 50x65 Hanging



### APPLICATIONS



### TECHNICAL DATA

Length	Depth	Height
4	35 & 50 mm	70 mm
6	35 & 50 mm	70 mm
8	35 & 50 mm	70 mm
10	35 & 50 mm	70 mm



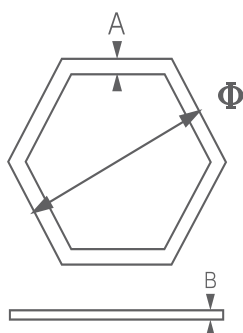


## HEXA PROFILE LIGHT

Arya is engaged with manufacturing of Aluminium Linear Profiles also. We supply high quality aluminium extruded profiles at competitive prices to variety of customers in different segments. With very talented administrator and specialised group, we give convenient conveyance and making a climate of constant updating of products.

We additionally offer the total solutions from product development to successful production of aluminium profiles as well as pipes. We have adequate infrastructure for die designing and developing for critical engineering and commodity aluminium.

We also welcome the inquiries for polymer extrusion and plastic accessories.



### APPLICATIONS



### TECHNICAL DATA

Dia (Φ)	A	B
300	25 mm	25 mm
450	35 mm	35 mm
600	50 mm	70 mm



LED Flood Lights  
H-42000002



LED Flood Lights  
H-42000002



LED Lamp  
H-42000019



LED Street Lights  
H-42000002



LED Street Lights  
H-42000002

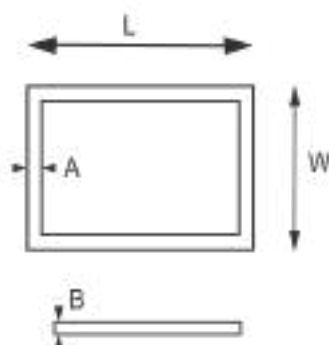


## RECTA PROFILE LIGHT

Arya is engaged with manufacturing of Aluminium Linear Profiles also. We supply high quality aluminium extruded profiles at competitive prices to variety of customers in different segments. With very talented administrator and specialised group, we give convenient conveyance and making a climate of constant updating of products.

We additionally offer the total solutions from product development to successful production of aluminium profiles as well as pipes. We have adequate infrastructure for die designing and developing for critical engineering and commodity aluminium.

We also welcome the inquiries for polymer extrusion and plastic accessories.



### APPLICATIONS



### TECHNICAL DATA

Size (L x W)	A	B
300x150	25 mm	25 mm
450x200	35 mm	35 mm
600x300	50 mm	35 mm
1200x300	35 mm	50 mm
1200x600	50 mm	50 mm





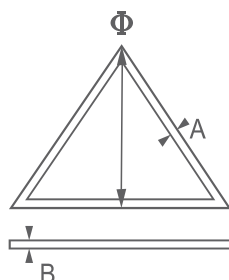


## TRIO PROFILE LIGHT

Arya is engaged with manufacturing of Aluminium Linear Profiles also. We supply high quality aluminium extruded profiles at competitive prices to variety of customers in different segments. With very talented administrator and specialised group, we give convenient conveyance and making a climate of constant updating of products.

We additionally offer the total solutions from product development to successful production of aluminium profiles as well as pipes. We have adequate infrastructure for die designing and developing for critical engineering and commodity aluminium.

**We also welcome the inquiries for polymer extrusion and plastic accessories.**



### APPLICATIONS



### TECHNICAL DATA

Φ	A	B
300 mm	25 mm	25 mm
450 mm	25 mm	25 mm
600 mm	25 mm	25 mm



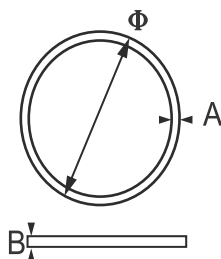


## RING PROFILE LIGHT

Arya is engaged with manufacturing of Aluminium Linear Profiles also. We supply high quality aluminium extruded profiles at competitive prices to variety of customers in different segments. With very talented administrator and specialised group, we give convenient conveyance and making a climate of constant updating of products.

We additionally offer the total solutions from product development to successful production of aluminium profiles as well as pipes. We have adequate infrastructure for die designing and developing for critical engineering and commodity aluminium.

We also welcome the inquiries for polymer extrusion and plastic accessories.



### APPLICATIONS



### TECHNICAL DATA

Φ	A	B
300 mm	16 mm	12 mm
450 mm	16 mm	12 mm
600 mm	16 mm	12 mm





*Add Light to Life*

# LED

## STREET LIGHT





## STREET LIGHT

LENTIS model offers luminaries from 25w to 150w, luminaries having aluminium pressure die-cast housing and powder coated to withstand all weather Conditions with PC / Acrylic Lens cover. Luminaries slim body with suitable heat sink and Driver compartment. Arya - Lentis Street have low maintenance cost and longer life. They are designed for outdoor applications with directional light which means emitted light in proper direction and have good light illumination. These fixtures brightly illuminate street Light and other general public areas. Boundaries wall lighting to keep the area safe and secure. Also available with 10KV external SPD.



## LENTIS

### APPLICATIONS



### TECHNICAL DATA

Cat. Ref.	Wattage	Voltage	Lumens	Colour Temp	THD	CRI	MRP
ANSLW25-LENTIS	25	90-300	>3000	3000-6000	<10	>70	1200
ANSLW36-LENTIS	36	90-300	>4320	3000-6000	<10	>70	1800
ANSLW50-LENTIS	50	90-300	>6000	3000-6000	<10	>70	2500
ANSLW72-LENTIS	72	90-300	>8640	3000-6000	<10	>70	3600
ANSLW90-LENTIS	90	90-300	>10800	3000-6000	<10	>70	5000
ANSLW120-LENTIS	120	90-300	>14400	3000-6000	<10	>70	6300
ANSLW150-LENTIS	150	90-300	>18000	3000-6000	<10	>70	7500







## PLATINO

## STREET LIGHT LUMINARIES

ARYA Platino model luminaries having heavy duty aluminium pressure die cast housing and powder coated to withstand all weather Conditions with High power LED Source up to 6 watt LEDs chip and flat toughened Glass cover. Luminaries operate on voltage range from 90VAC to 300VAC, over voltage protection, Phase to phase fault protection, ingress protection 65/66. Luminaires are equipped with Polycarbonate Lens/optics.

Also available with 10KV external SPD.

Application suitable for lighting for street lighting, parking Area, main road etc.

### APPLICATIONS



### TECHNICAL DATA

Cat. Ref.	Wattage	Voltage	Lumens	Colour Temp	THD	CRI	MRP
ANSLW45-PLATINO	45	90-300	>5400	3000-6000	<10	>70	2250
ANSLW90-PLATINO	90	90-300	>10800	3000-6000	<10	>70	4500
ANSLW100-PLATINO	100	90-300	>12000	3000-6000	<10	>70	5000
ANSLW150-PLATINO	150	90-300	>18000	3000-6000	<10	>70	7500
ANSLW200-PLATINO	200	90-300	>24000	3000-6000	<10	>70	10000







## STREET LIGHT



### DOLPHIN

ARYA - Dolphin Street light specific designed for Aerodynamics comes in aluminium PDC body with Polycarbonate Modular lens for proper light distribution. The product is powered by high power led chips. High surge protection and flat toughened Glass cover & IP66 protection is a path breaking story in the segment. Arya Street Light luminaries are an ideal solution for brightly illuminating residential colonies, roadways, highways, pathways, malls, industrial units, outdoor areas like gardens and parks. Arya Dolphin luminaries are reliable, durable and engineered for robust performance.

Also available with 10KV external SPD.

These fixtures also brightly illuminate petrol pumps, airports, railway stations, shipyards and other general public areas, keeping the area safe and secure with beautification.

### APPLICATIONS



### TECHNICAL DATA

Cat. Ref.	Wattage	Voltage	Lumens	Colour Temp	THD	CRI	MRP
ANSLW70-DOLPHIN	70	90-300	>8400	3000-6000	<10	>70	3500
ANSLW90-DOLPHIN	90	90-300	>10800	3000-6000	<10	>70	4500
ANSLW100-DOLPHIN	100	90-300	>12000	3000-6000	<10	>70	5000
ANSLW120-DOLPHIN	120	90-300	>14400	3000-6000	<10	>70	6000





## STREET LIGHT

ARYA - XBEAM luminaries specific discreet design comes in aluminium PDC body with a built in lens for proper light distribution. The product is powered by high power led chips. The High surge protection & IP65 protection and flat toughened Glass cover. ARYA - XBEAM Street light specific discreet design is ideally suitable for extra wide beam for major wider city roads, and National Highways. Xbeam Street Light range of street luminaires are an ideal solution for brightly illuminating, roadways, highways, malls, outdoor areas like gardens and parks. Our range of street lights are reliable, durable and engineered for long lasting performance. These fixtures brightly illuminate petrol pumps, airports, railway stations, shipyards and other general public areas, keeping the area safe and secure with beatification.

Also available with 10KV external SPD



### XBEAM

### APPLICATIONS



### TECHNICAL DATA

Cat. Ref.	Wattage	Voltage	Lumens	Colour Temp.	THD	CRI	MRP
ANSLW100-XBEAM	100	90-300	>12000	3000-6000	<10	>70	5000
ANSLW150-XBEAM	150	90-300	>18000	3000-6000	<10	>70	7500





## STREET LIGHT

ARYA - Motion sensor Street light comes with aluminium die cast body with a built-in lens for proper light distribution. With help of Motion sensor with intelligence PLC for Auto ON - OFF operation non-working / motion hours. Also available with 10KV external SPD. Street luminaries are an ideal solution for brightly illuminating residential colonies, Parking Place, pathways, malls, industrial units, outdoor areas like gardens and parks. Our range of street lights are reliable, durable and engineered for robust performance. These fixtures brightly illuminate petrol pumps, airports, railway stations, shipyards and other general public areas, keeping the area safe and secure with beatification.

## MOTION SENSOR

### STREET-LIGHT



### TECHNICAL DATA

Cat. Ref.	Wattage	Voltage	Lumens	Colour Temp	THD	CRI	MRP
ANSLW50-AUTO	50	90-300	>6000	3000-6000	<10	>70	2500
ANSLW100-AUTO	100	90-300	>10800	3000-6000	<10	>70	5000
ANSLW150-AUTO	150	90-300	>18000	3000-6000	<10	>70	7500
ANSLW200-AUTO	200	90-300	>24000	3000-6000	<10	>70	10000





## LOW VOLTAGE/24 VAC/DC STREET LIGHT

Arya LED Street light fittings having aluminium pressure die cast housing and powder coated to withstand all weather Conditions with High power LED Source and flat toughened Glass cover. Operating Voltage are 24VDC. These fixtures are special designed LED Smart Driver unit for optimum output for operate at Low voltage. All the fixtures are tested in NABL approved laboratory. Also available with 10KV external SPD.

## SAFETY LIGHT



### TECHNICAL DATA

Cat. Ref.	Wattage	Voltage	Lumens	Colour Temp	THD	CRI	MRP
ANSLW45-SAFETY	45	24 VDC/AC	>6000	3000-6000	<20	>70	4500
ANSLW90-SAFETY	90	24 VDC/AC	>10800	3000-6000	<20	>70	9000
ANSLW100-SAFETY	100	24 VDC/AC	>18000	3000-6000	<20	>70	10000
ANSLW150-SAFETY	150	24 VDC/AC	>24000	3000-6000	<20	>70	15000







## STREET LIGHT

### RECHARGEABLE



ARYA Rechargeable Cool Day Light Led Street light you can just lit up your space during power outage. LED Street light fitting SMD type is having aluminium pressure die cast housing and powder coated to withstand all Weather conditions. It's backup time varies according to rating of inbuilt lithium ion battery. Normally it gives backup upto 3-4hrs.

## INVERTOR

### STREET-LIGHT



### TECHNICAL DATA

Cat. Ref.	Wattage	Voltage	Lumens	Colour Temp	BATTERY BACK-UP	MRP
ANSLW20-INV	20	230 VAC	>2400	3000-6000	UPTO 3 Hrs	7500
ANSLW30-INV	30	230 VAC	>3600	3000-6000	UPTO 3 Hrs	9000







## SOLAR STREET LIGHT



ARYA LED Solar light - integrated which offers LED outdoor from 15W to 60W. Fittings having aluminium pressure die cast housing and powder coated to withstand all weather Conditions.

**All in One Solar Street Light :** This type of solar light combines the Solar panel, LED light, battery and solar driver card into a single assembly. This makes the installation much easier as compared to any other model, and leads to lower solar street light price. Generally, a motion sensor detector is part of the light and helps in adjusting the solar light brightness. If there is any movement near the light, the motion sensor adjusts the LED to glow at full brightness. The light brightness reduces if there is no movement for more than 1 minute. This leads to better light backup times and longer battery life. Arya offers AIO Solar street lights from 10W to 30W LED.

## INTEGRATED SOLAR STREET LIGHT

### TECHNICAL DATA

Cat. Ref.	Wattage	Voltage	Lumens	Colour Temp	MRP
ANSLW12-INSLR	12	12 VDC	>1200	3000-6000	18000
ANSLW18-INSLR	18	12 VDC	>1800	3000-6000	24000
ANSLW24-INSLR	24	12 VDC	>2400	3000-6000	30000
ANSLW30-INSLR	30	12 VDC	>3000	3000-6000	42000



### APPLICATIONS





## SOLAR STREET LIGHT

**Integrated Solar Street Light :** Also known as, Two-in-One model, this type of solar streetlight is supplied in two parts - Solar panel and solar LED luminaire with battery. The solar panel is mounted on the pole independently of the solar light; it can be aligned to exact south facing direction, for best performance. The LED luminaire contains the LED light, battery and solar driver card and is waterproof. ARYA manufactures Semi-integrated solar streetlights from 12W to 60W LED and can provide 2 days backup from single day's charging. Optionally, a motion sensor can also be supplied with this light to control light brightness.

## SEMI-INTEGRATED SOLAR STREET LIGHT

### TECHNICAL DATA

Cat. Ref.	Wattage	Voltage	Lumens	Colour Temp	MRP
ANSLW12-SISLR	12	12 VDC	>1200	3000-6000	19000
ANSLW18-SISLR	18	12 VDC	>1800	3000-6000	25000
ANSLW24-SISLR	24	12 VDC	>2400	3000-6000	31000
ANSLW36-SISLR	36	12 VDC	>3600	3000-6000	43000
ANSLW45-SISLR	45	12 VDC	>4500	3000-6000	51000
ANSLW60-SISLR	60	12 VDC	>6000	3000-6000	62000

### APPLICATIONS





## SOLAR STREET LIGHT

In this model, the solar light is installed as three separate parts. The solar panel is installed on the pole independently of the solar light. The Solar light is mounted on a light support shoulder and the battery is housed inside a separate waterproof battery box, mounted either on the pole or underground near the pole. As the name suggest, this model was popular in early days of solar streetlights. This model got less popular as it posed the problem of battery being easily accessible and hence cases of battery theft were high. In addition, most of these traditional solar streetlights were powered using flooded lead acid batteries, which required regular battery water top-up. This led to higher maintenance costs and frequent faults as batteries ran dry. ARYA manufactures Non-integrated solar streetlights from 25 to 60W LED



## NON-INTEGRATED SOLAR STREET LIGHT

### TECHNICAL DATA

Cat. Ref.	Wattage	Voltage	Lumens	Colour Temp.	MRP
ANSLW25-NISLR	25	12 VDC	>2500	3000-6000	32200
ANSLW36-NISLR	36	12 VDC	>3600	3000-6000	44200
ANSLW45-NISLR	45	12 VDC	>4500	3000-6000	52200
ANSLW60-NISLR	60	12 VDC	>6000	3000-6000	63200

### APPLICATIONS





*Add Light to Life*

# LED

## FLOOD LIGHT







## FLOOD LIGHT

LED flood light fittings having robust aluminium pressure die cast housing and powder coated to withstand all weather Conditions. The fittings are equipped with High power LED Source with different colour temperature and flat toughened Glass cover. Fittings are also available with specialized PC modular lens and 10 kv external SPD. Application suitable to light up sign board, bill boards, Outdoor advertising, playground, Road crossing Square for proper illumination

### ENDURA-1

#### APPLICATIONS



#### TECHNICAL DATA

Cat. Ref.	Wattage	Voltage	Lumens	Colour Temp	THD	CRI	MRP
ANFLW50-ENDURA1	50	90-300	>6000	3000-6500	<10	>70	4000
ANFLW100-ENDURA1	100	90-300	>12000	3000-6500	<10	>70	8000







## FLOOD LIGHT

New generation of High Power saving LED light fitting SMD type LED and having specially designed aluminium pressure die cast housing and powder coated to withstand all weather conditions and flat toughened Glass cover. Fittings are also available with specialized PC modular lens and 10 kv external SPD.

And suitable for lighting of high mast application, playground and Garden / public place illumination.

### ENDURA-2

#### APPLICATIONS



#### TECHNICAL DATA

Cat. Ref.	Wattage	Voltage	Lumens	Colour Temp	THD	CRI	MRP
ANFLW150-ENDURA2	150	90-300	>18000	3000-6500	<10	>70	9000
ANFLW200-ENDURA2	200	90-300	>24000	3000-6500	<10	>70	12000





## FLOOD LIGHT



New generation High Power saving LED light fitting SMD type LED and having specially design aluminium pressure die cast housing and powder coated to withstand all Weather conditions and flat toughened Glass cover. Fittings are also available with specialized PC modular lens and 10 kv external SPD. And suitable for lighting of high mast application, playground and Garden / public place illumination.

The beautifully designed product is perfectly suited, construction sites, mine areas, landscape gardens, Warehouses & shipping yards

## ENDURA-3

### APPLICATIONS



### TECHNICAL DATA

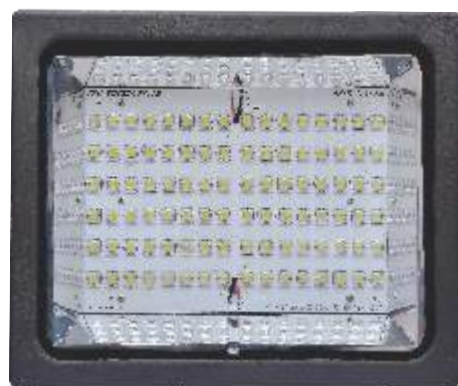
Cat. Ref.	Wattage	Voltage	Lumens	Colour Temp	THD	CRI	MRP
ANFLW250-ENDURA3	250	90-300	>30000	3000-6500	<10	>70	12500
ANFLW300-ENDURA3	300	90-300	>36000	3000-6500	<10	>70	15000





## FLOOD LIGHT

New generation High Power saving LED light fitting SMD type LED having very heavy duty aluminium PDC housing and powder coated to withstand all severe weather conditions and flat toughened glass cover. Fittings are also available with specialized PC modular lens and 10 kv external SPD. Luminaires are suitable for lighting of high mast application, big playground, Big Park / public place illumination.



## ENDURA-4

### APPLICATIONS



### TECHNICAL DATA

Cat. Ref.	Wattage	Voltage	Lumens	Colour Temp	THD	CRI	MRP
ANFLW350-ENDURA4	350	90-300	>42000	3000-6500	<10	>70	15750
ANFLW400-ENDURA4	400	90-300	>48000	3000-6500	<10	>70	18000





## FLOOD LIGHT

LED flood light fittings having robust aluminium pressure die cast housing and powder coated to withstand all weather conditions. The fittings are equipped with high power LED Source with different colour temperature and flat toughened glass cover. Fittings are also available with 10 kv external SPD.

Application suitable to light up sign board, bill boards. Outdoor advertising, playground, small public house, Tent House applications for proper illumination

### GOLD

#### APPLICATIONS



#### TECHNICAL DATA

Cat. Ref.	Wattage	Voltage	Lumens	Colour Temp	THD	CRI	MRP
ANFLW50-GOLD	50	90-300	>6000	3000-6000	<10	>70	2500
ANFLW50-GOLD	100	90-300	>12000	3000-6000	<10	>70	5000
ANFLW50-GOLD	150	90-300	>18000	3000-6000	<10	>70	7500





## FLOOD LIGHT

Arya LENTIS Flood Lights High Power saving LED light fitting SMD type LED is easy to handle to withstand all Weather conditions with PC lens cover.

The beautifully designed product is perfectly suited to light up sign board, bill boards, Outdoor advertising, construction sites, mine areas, landscape gardens, ware houses and other general purpose lighting.

## LENTIS

### APPLICATIONS



### TECHNICAL DATA

Cat. Ref.	Wattage	Voltage	Lumens	Colour Temp	THD	CRI	MRP
ANFLW50-LENTIS	50	90-300	>6000	3000-6000	<10	>70	2250
ANFLW100-LENTIS	100	90-300	>12000	3000-6000	<10	>70	4500
ANFLW150-LENTIS	150	90-300	>18000	3000-6000	<10	>70	6750
ANFLW200-LENTIS	200	90-300	>24000	3000-6000	<10	>70	9000







## FLOOD LIGHT

New generation High Power saving LED light fitting SMD type LED having very heavy duty aluminium PDC housing and powder coated to withstand all severe Weather conditions and flat toughened Glass cover. Luminaires are available with polycarbonate modular Lens with wide beam, maintenance free Luminaires The product comes with inbuilt 10 kva surge protection & IP66 protection which is path breaking in the flood light segment.

Fittings are also available with specialized PC modular lens and 10 kv external SPD. Luminaires are suitable for lighting of high mast application stadium lighting, big playground.

## STADIUM LIGHT

### APPLICATIONS



### TECHNICAL DATA

Cat. Ref.	Wattage	Voltage	Lumens	Colour Temp	THD	CRI	MRP
ANFLW500-HMST	500	90-300	>60000	3000-6500	<10	>70	20000
ANFLW700-HMST	700	90-300	>84000	3000-6500	<10	>70	28000
ANFLW1000-HMST	1000	90-300	>120000	3000-6500	<10	>70	40000
ANFLW2000-HMST	2000	90-300	>240000	3000-6500	<10	>70	80000





## FLOOD LIGHT

24 VOLT



LED flood light fittings having aluminium pressure die cast housing and powder coated to withstand all weather conditions with high power LED Source and flat toughened glass cover. Operating Voltage are 24VDC/ to 48 VDC. These fixtures are special designed LED Smart Driver unit for optimum output for operate at low voltage. Fittings are also available with specialized PC modular lens and 10 kv external SPD. 24 volts Flood Lights LM 79 & type test report by NABL Certified Laboratory

## SAFETY LIGHT

### APPLICATIONS



### TECHNICAL DATA

Cat. Ref.	Wattage	Voltage	Lumens	Colour Temp	THD	CRI	MRP
ANFLW30-SAFETY	30	24 VDC	>3600	2700-6500	<10	>70	4500
ANFLW70-SAFETY	70	24 VDC	>8400	2700-6500	<10	>70	5250
ANFLW100-SAFETY	100	24 VDC	>12000	2700-6500	<10	>70	7100
ANFLW120-SAFETY	120	24 VDC	>14400	2700-6500	<10	>70	8400





## FLOOD LIGHT

LED flood light fittings having aluminium pressure die cast housing and powder coated to withstand all weather conditions with high power LED Source and flat toughened glass cover. Fittings are also available with specialized PC modular lens and 10 kv external SPD.

Application suitable for lighting for colourful festival Area lighting suited to advertising, beautification of Garden lighting, Facade lighting and Puja Pandal etc.

## COLOR LIGHT

### APPLICATIONS



### TECHNICAL DATA

Cat. Ref.	Wattage	Voltage	Lumens	Colour	THD	CRI	MRP
ANFLW50-COLOR	50	90-300	>6000	RED/GRN/YLG/BLUE	<10	>70	4500
ANFLW100-COLOR	100	90-300	>12000	RED/GRN/YLG/BLUE	<10	>70	8000
ANFLW150-COLOR	150	90-300	>18000	RED/GRN/YLG/BLUE	<10	>70	12000
ANFLW200-COLOR	200	90-300	>24000	RED/GRN/YLG/BLUE	<10	>70	14000





## RGB LIGHT

## FLOOD LIGHT

LED RGB flood light fittings having aluminium pressure die cast housing and powder coated to withstand all weather conditions with high power LED Source and flat toughened glass cover. Fittings are also available with specialized PC modular lens and 10 kv external SPD. The Luminaires come with two type of colour changing mode as below-

- Auto colour changing mode where fixed time period colour will change
- Manual colour colour changing mode by Remote

Application suitable for lighting for colourful festival area lighting suited to advertising, beautification of Garden lighting, Facade lighting and Puja Pandal etc.

### APPLICATIONS



### TECHNICAL DATA

Cat. Ref.	Wattage	Voltage	Lumens	Colour	THD	CRI	MRP
ANFLW50-RGB	50	90-300	>6000	RED/GRN/YLG BLUE	<10	>70	5000
ANFLW100-RGB	100	90-300	>12000	RED/GRN/YLG BLUE	<10	>70	8500
ANFLW150-RGB	150	90-300	>18000	RED/GRN/YLG BLUE	<10	>70	12500







## FLOOD LIGHT

Canopy lighting is the most common term for exterior lighting designed for under an exterior overhang. This form of exterior lighting is most typically mounted under overhangs or on buildings with the primary purpose of providing directional illumination for vehicles and pedestrians.

Features of LED Canopy Light

- High efficiency, up to 140 LPW / CCT: 2700k - 6500k, Long Life, 70,000 hours
- >95% power efficiency, CRI > 70, Easy to install, Sleek design, ultra slim only 20 mm, IP65, providing a reliable, weather-tight seal and flat toughened glass cover

## CANOPY LIGHT

### APPLICATIONS



### TECHNICAL DATA

Cat. Ref.	Wattage	Voltage	Lumens	Colour	THD	CRI	MRP
ANFLW80-CANOP	80	90-300	>6000	3000-6500	<10	>70	5500
ANFLW100-CANOP	100	90-300	>12000	3000-6500	<10	>70	8600
ANFLW120-CANOP	120	90-300	>14400	3000-6500	<10	>70	7600







*Add Light to Life*

# LED

## HIGHBAY LIGHT





## HIGH BAY

### LUMINARIES

LED High bay fitting is having aluminium pressure die cast housing and powder coated to withstand all weather conditions. The fitting is equipped with flat toughened Glass cover, IP-65/66 and the LED driver is having unique features such as constant current, THD <10%, power factor >0.95, surge protection of 5 kv, operating voltage range 100-300 VAC with instant start. Available with separate PC lens for better lumen distribution.

## ROBO-1

### APPLICATIONS



### TECHNICAL DATA

Cat. Ref.	Wattage	Voltage	Lumens	Colour Temp	THD	CRI	MRP
ANHBW80-ROBO1	80	90-300	>9600	3000-6000	<10	>70	5600
ANHBW100-ROBO1	100	90-300	>12000	3000-6000	<10	>70	8000
ANHBW120-ROBO1	120	90-300	>14400	3000-6000	<10	>70	9600





## HIGH BAY LUMINARIES



Arya LED High bay fitting is having aluminium PDC and powder coated to withstand all weather conditions for longer life. The fitting is designed for bigger shed and higher height more than 12mtr. The fitting is equipped with flat toughened Glass cover, IP-65/66 and the LED driver is having unique features such as constant current, THD <10%, power factor >0.95, Surge protection of 5 kv, operating voltage range 100-300 VAC with instant start. Also Available with PC Modular Lens for better lumen distribution and with 10KV external SPD.

Application: Luminaries are suitable for Industrial Lights, Work shop/Industrial Shed lighting, Warehouses Lighting etc.

### ROBO-2

#### APPLICATIONS



#### TECHNICAL DATA

Cat. Ref.	Wattage	Voltage	Lumens	Colour Temp	THD	CRI	MRP
ANHBW150-ROBO2	150	90-300	>18000	3000-6000	<10	>70	10500
ANHBW180-ROBO2	180	90-300	>21600	3000-6000	<10	>70	14000
ANHBW200-ROBO2	200	90-300	>24000	3000-6000	<10	>70	15500





## HIGH BAY

### LUMINARIES



### ROBO-3

The ARYA - ROBO-3 High Bay fitting is specially designed for Heavy duty operation and maintenance free performance. Available with PC Modular Lens for better lumen distribution and proper illumination. Robo-3 is having aluminium PDC and powder coated to withstand all weather conditions for longer life. The fitting is designed for longer and giant type shed and higher height more than 15 mtr. The fitting is equipped with flat toughened Glass cover, IP-65/66 and the LED driver is having unique features such as constant current, THD <10%, power factor >0.95, Surge protection of 5 kv, operating voltage range 100-300 VAC with instant start. Also available with 10KV external SPD.

Application: Luminaries are suitable for Industries, Workshops/Industrial Sheds lighting, Warehouses Lighting etc.

### APPLICATIONS



### TECHNICAL DATA

Cat. Ref.	Wattage	Voltage	Lumens	Colour Temp	THD	CRI	MRP
ANHBW250-ROBO3	250	90-300	>30000	3000-6000	<10	>70	14500
ANHBW300-ROBO3	300	90-300	>36000	3000-6000	<10	>70	16000







## HIGH BAY

### LUMINARIES

LED High bay fitting is specially designed housing materials in Sunflower shape and powder coated to withstand all weather conditions. The ingress protection of fitting is IP-65. The fins are made of special Materials for high thermal conductivity. The fitting is easy to handle and also give optimum performance.

Also available with 10KV external SPD

Application : Luminaries are suitable for Industries, Work shops, Warehouses etc.

## SUDARSHAN

### APPLICATIONS



### TECHNICAL DATA

Cat. Ref.	Wattage	Voltage	Lumens	Colour Temp	THD	CRI	MRP
ANHBW100-SURDN	100	90-300	>12000	3000-6000	<10	>70	7500
ANHBW150-SURDN	150	90-300	>18000	3000-6000	<10	>70	9750







## LENTIS

## HIGH BAY

### LUMINARIES

Arya LENTIS LED High bay fitting is aesthetically and attractive design. The luminaries having aluminium PDC housing and powder coated to with stand all weather conditions. The fitting is robust with PC / Acrylic lens cover, IP-66 and the LED driver is having unique features such as constant current, THD <10%, power factor >0.95, surge protection of 5 kv, operating voltage range 100-300 VAC with instant start. Also available with 10KV external SPD.

Application: Luminaries are suitable for Industries Lights, Workshops, Warehouses etc.

### APPLICATIONS



### TECHNICAL DATA

Cat. Ref.	Wattage	Voltage	Lumens	Colour Temp	THD	CRI	MRP
ANHBW100-LENTIS	100	90-300	>12000	3000-6000	<10	>70	8000
ANHBW150-LENTIS	150	90-300	>18000	3000-6000	<10	>70	12000
ANHBW200-LENTIS	200	90-300	>24000	3000-6000	<10	>70	16000





*Add Light to Life*

**LED**

**INDUSTRIAL LIGHTS**





## WELL GLASS

ARYA LED Well Glass fittings having aluminium pressure die cast housing with flat toughened Glass / Acrylic Cover diffuser-Clear/Frosted. Available in Both opal and Clear Vandal resistant Polycarbonate diffuser.

Application: Fittings are suitable for Industrial application, Tunnel and mines, parking shed etc.

## ALTO

### APPLICATIONS



### TECHNICAL DATA

Cat. Ref.	Wattage	Voltage	Lumens	Colour Temp	THD	CRI	MRP
ANWGW27-ALTO	27	90-300	>3240	3000-6000	<10	>70	2700
ANWGW30-ALTO	30	90-300	>3600	3000-6000	<10	>70	3000





## WELL GLASS

ARYA LED Well Glass fittings having aluminium pressure die cast housing with Flat toughened Glass/Acrylic Cover diffuser-Clear/Frosted, Available in Both opal and Clear Vandal resistant Polycarbonate diffuser.

Application: Fittings are suitable for wider industrial application, Large Tunnel and mines, parking shed, power plant, coal mines, cement plant, steel plants, industrial sheds etc.

## DYNAMO-1

### APPLICATIONS



### TECHNICAL DATA

Cat. Ref.	Wattage	Voltage	Lumens	Colour Temp	THD	CR	MRP
ANNGW35	35	90-300	>4200	3000-6500	<10	>70	3500
ANNGW40	40	90-300	>4800	3000-6500	<10	>70	4000
ANNGW45	45	90-300	>5400	3000-6500	<10	>70	4500
ANNGW50	50	90-300	>6000	3000-6500	<10	>70	5000







## WELL GLASS



ARYA LED Well Glass fittings having aluminium pressure die cast housing with Flat toughened Glass / Acrylic Cover diffuser- Clear/Frosted. Available in Both opal and Clear Vandal resistant Polycarbonate diffuser. High Power LED source up to 5w LEDs with PC lenses, surge protection 5kv internal additional external SPD up to 10KV, IP 65/66 fixtures. Fittings have operated voltage range from 90VAC to 300VAC, over voltage protection, Phase to phase fault protection, ingress protection 65/66. Luminaries are equipped with Polycarbonate Lens.

Application: Fittings are suitable for wider industrial application, Large Tunnel and mines, parking shed, power plant, coal mines cement plant, steel plants, industrial sheds etc.

## DYNAMO-2

### APPLICATIONS



### TECHNICAL DATA

Cat. Ref.	Wattage	Voltage	Lumens	Colour Temp	THD	CRI	MRP
ANWGW50-DYNAMO	60	90-300	>7200	3000-6500	<10	>70	5400
ANWGW70-DYNAMO	70	90-300	>8400	3000-6500	<10	>70	6300
ANWGW80-DYNAMO	80	90-300	>9600	3000-6500	<10	>70	7200







## HAND LAMPS

ARYA LED 24V AC Industrial Hand lamps are used in maintenance/ confined space, shut down applications as per industry standards. These lights have to be moved from one location to another location. In this application these lights are recommended to avoid 220V AC so as to prevent electrocution hazard. The applications include maintenance of kiln, mill, boilers furnace etc.

Basic Features of Arya LED 24V LED Hand Lamp

- Operating Voltage - 24 VDC.
- Body Material - Die cast Alu. / ABS.
- Lighting Colour Cool White.
- Certification: BIS- CRS, ISO
- Uv Free: yes

Input Voltage: 24V AC/DC

Base Type : Handle Based



### APPLICATIONS



### TECHNICAL DATA

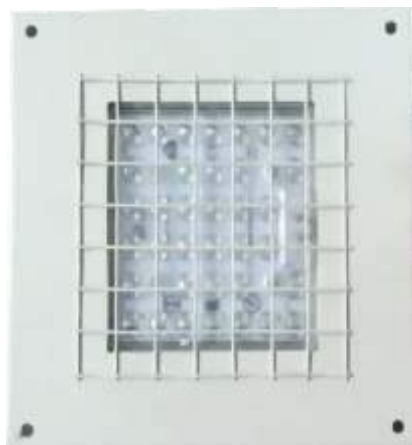
Cat. Ref.	Wattage	Voltage	Lumens	Colour Temp	THD	CRI	MRP
ANHLW10-IND	10	24 VDC/AC	>1200	6000+/-500K	<10	>70	3850
ANHLW12-IND	12	24 VDC/AC	>1440	6000+/-500K	<10	>70	4100
ANHLW15-IND	15	24 VDC/AC	>1800	6000+/-500K	<10	>70	4600





## PIT LIGHT

Arya LED inspection pit lights are used for focused lighting for Maintenance and other allied works. The fittings are designed for all weather condition with Alu. PDC casting. Application of Arya PIT Light fitting are Railway Yard, Car Service centre, Industrials work etc.



### APPLICATIONS



### TECHNICAL DATA

Cat. Ref.	Wattage	Voltage	Lumens	Colour Temp	THD	CRI	MRP
ANPTL12-IND	12	90-300	>1440	2700-6500K	<10	>70	4500
ANPTL18-IND	18	90-300	>2200	2700-6500K	<10	>70	5250
ANPTL22-IND	22	90-300	>2600	2700-6500K	<10	>70	6500





## BULK HEAD

LED Bulk Head fittings having aluminium pressure die cast housing with toughened Glass / polycarbonate / Acrylic Cover diffuser in 6 to 15 watt in CCT of 3000k / 4500k / 5700k / 6500k; Suitable for wall mounting / Pipe bracket mounting.

Application: Boundary wall, Path way Lighting, Parking Lot, etc.

### APPLICATIONS



### TECHNICAL DATA

Cat. Ref.	Wattage	Voltage	Lumens	Colour Temp	THD	CRI	MRP
ANPSW12-BLKH	12	90-300	>1440	3000-6000K	<10	>70	1500





## TUBE LIGHT-PC

Decorative Polycarbonate LED batten in Rectangular shape with high efficient PC diffuser and beautiful designed end cap.

### APPLICATIONS



### TECHNICAL DATA

Cat. Ref.	Wattage	Voltage	Lumens	Colour Temp	THD	CRI	MRP
ANTLW10	10	90-300	>1200	3000-6000	<10	>70	350
ANTLW18	18	90-300	>2160	3000-6000	<10	>70	550
ANTLW20	20	90-300	>2400	3000-6000	<10	>70	550
ANTLW22	22	90-300	>2640	3000-6000	<10	>70	550
ANTLW24	24	90-300	>2880	3000-6000	<10	>70	550
ANTLW36	36	90-300	>4320	3000-6000	<10	>70	950
ANTLW40	40	90-300	>4800	3000-6000	<10	>70	1050







## TUBE LIGHT

### ALUMINUM BACK

Aluminium extruded batten Light in square shape with high efficient PC diffuser for uniform light distribution.



### APPLICATIONS



### TECHNICAL DATA

Cat. Ref.	Wattage	Voltage	Lumens	Colour Temp	THD	CR	MRP
ANTLW10-IND	10	90-300	>1200	3000-6000	<10	>70	550
ANTLW18-IND	18	90-300	>2160	3000-6000	<10	>70	750
ANTLW36-IND	36	90-300	>4320	3000-6000	<10	>70	1100
ANTLW40-IND	40	90-300	>4800	3000-6000	<10	>70	1200







## RETROFIT

### TUBE LIGHT

Decorative Polycarbonate LED retrofit in round shape with high efficient PC diffuser and beautiful designed end G13-cap, 7-8.



### APPLICATIONS



### TECHNICAL DATA

Cat. Ref.	Wattage	Voltage	Lumens	Colour Temp	THD	CRI	MRP
ANTLW10-R	10	90-300	>1200	3000-6000	<10	>70	400
ANTLW18-R	18	90-300	>2160	3000-6000	<10	>70	600
ANTLW20-R	20	90-300	>2400	3000-6000	<10	>70	600
ANTLW22-R	22	90-300	>2640	3000-6000	<10	>70	650
ANTLW24-R	24	90-300	>2880	3000-6000	<10	>70	650
ANTLW36-R	36	90-300	>4320	3000-6000	<10	>70	1000
ANTLW40-R	40	90-300	>4800	3000-6000	<10	>70	1200





## RETROFIT

### TUBE LIGHT (Alu.)

Aluminium extruded Retrofit Tube Light in round shape with high efficient PC diffuser for uniform light distribution.



### APPLICATIONS



### TECHNICAL DATA

Cat. Ref.	Wattage	Voltage	Lumens	Colour Temp	THD	CRI	MRP
ANTLW10-IND	10	90-300	>1200	3000-6000	<10	>70	450
ANTLW18-IND	18	90-300	>2160	3000-6000	<10	>70	800
ANTLW36-IND	36	90-300	>4320	3000-6000	<10	>70	1150
ANTLW40-IND	40	90-300	>4800	3000-6000	<10	>70	1250





## LINEAR LIGHT

LED Linear Light in Rectangular shape with high efficient PC/Acrylic diffuser for uniform light distribution.

### APPLICATIONS



### TECHNICAL DATA

Cat. Ref.	Wattage	Voltage	Lumens	Colour Temp	THD	CRI	MRP
ANLW36-IND	36	90-300	>4320	3000-6000	<10	>70	1650
ANLW40-IND	40	90-300	>4800	3000-6000	<10	>70	1750





## CLEAN ROOM

Clean Room Lighting solutions available with us at ARYA Lighting use high-efficacy LEDs. The self-aligning mounting mechanism in each LED Clean Room Light Fixture ensures precision and faster installation. In addition, the specially designed pressure plates provide positive locking, dust, and water-proofing. Finally, driver of each LED Clean Room Light Fixture is designed keeping in mind the Indian power conditions, thus incredibly resourceful Hospitals, laboratories and production environments like the food industry require lighting solutions that offer pure light, are easy-to-clean, dust-free and leave no room for errors. With the latest Cleanroom LED lighting, it has become easy for such operational facilities to provide the right light to the employees.

Two Type of Cleanroom Fittings:  
Top Opening, Bottom Opening



Top Opening



Bottom Opening



### APPLICATIONS



### TECHNICAL DATA

Cat. Ref.	Wattage	Voltage	Lumens	Colour Temp	THD	CRI	MRP
ANCRLW120-TO	20	90-300	>2400	3000-6500	<10	>70	7000
ANCRLW120-BO	20	90-300	>2400	3000-6500	<10	>70	7000
ANCRLW140-TO	40	90-300	>4800	3000-6500	<10	>70	12500
ANCRLW140-BO	40	90-300	>4800	3000-6500	<10	>70	12500







## SEARCH LIGHT

Arya New generation High Power saving LED Search light fitting having specially design aluminium pressure die cast housing and powder coated to withstand all Weather conditions.

There Two Type of search as bellow:

- Manual Hand held rotation.
- Motorized Rotation Mechanism

Range of luminaries upto 3-4 KM



### APPLICATIONS



### TECHNICAL DATA

Cat. Ref.	Wattage	Voltage	Lumens	Colour Temp	THD	CRI	MRP
ANSRLW150	150	90-300	>18000	3000-6000	<10	>70	14250
ANSRLW250	250	90-300	>30000	3000-6000	<10	>70	16500
ANSRLW300	300	90-300	>36000	3000-6000	<10	>70	18000
ANSRLW500	500	90-300	>60000	3000-6000	<10	>70	22500





## SINGLE DOME

LED Die-Cast Aluminum Housing. High Quality Red polycarbonate Diffuser. Optical pattern designed for optimum efficiency. Instant Switch ON. Integrated Photo Switch for Auto ON-OFF operation. LED drivers using Microprocessor Digital Technology. Flashing aviation red beacons (20 to 40 flashes per minute) and steady burning aviation red lights during night-time operation. Aviation orange and white paint is used for daytime marking.

### APPLICATIONS



### TECHNICAL DATA

Cat. Ref.	Wattage	Voltage	Lumens	Colour Temp	THD	CRI	MRP
ANALW10-IND	10	90-300	>1200	AS PER CUSTOMER REQUIRED	<10	>70	3500
ANALW20-IND	20	90-300	>2400		<10	>70	4600





## TWIN DOME



LED Die-Cast Aluminium Housing. High Quality Red polycarbonate Diffuser. Optical pattern designed for optimum efficiency. Instant Switch ON. Integrated Photo Switch for Auto ON-OFF operation. LED drivers using Microprocessor Digital Technology. Flashing aviation red beacons (20 to 40 flashes per minute) and steady burning aviation red lights during night-time operation. Aviation orange and white paint is used for daytime marking.

### APPLICATIONS



### TECHNICAL DATA

Cat. Ref.	Wattage	Voltage	Lumens	Colour Temp	THD	CRI	MRP
ANALW20-IND	20	90-300	>3600	AS PER CUSTOMER REQUIRED	<30	>70	5200
ANALW50-IND	50	90-300	>4800		<30	>70	8600





*Add Light To Life*

# LED LIGHTS

## BATTERY OPERATED







## BATTERY OPERATED

### PORTABLE FLOOD LIGHT

Arya Rechargeable Battery Operated flood light is the best in class light. The product comes with inbuilt DC battery of 12VDC , 3200/5200 MAH, Lights fittings is IP65/66 , Skva surge protection which is path breaking in the flood light segment. The product comes with Aluminium die cast body which helps in proper heat dissipation & provides a long life to the product. Accessories along with fittings are Adapter with 3 mtr cable, Stand with Handle with fixture. The beautifully designed product is perfectly suited to light up Industries, service centres, construction sites, mine areas, landscape gardens, ware houses & railways Yards and shipping yards

## FLOOD LIGHT

### RECHARGEABLE

#### APPLICATIONS



#### TECHNICAL DATA

Cat. Ref.	Wattage	Voltage	Lumens	Colour Temp	BATTERY BACK-UP	MRP
ANFLW30-EM	30	230 VAC	>3600	3000-6000	UPTO 3 Hrs	9000





## BATTERY OPERATED

Arya Aluminium ABS Rechargeable Battery Operated search Lights one of robust class light upto 5000 lumens Handheld Searchlight Large 18650 Battery 2000mah Long Lasting Waterproof. Lights. fittings is IP65/66. The product comes with Aluminium die cast body and ABS / non conducting materials which helps in proper heat dissipation & provides a long life to the product.

## HAND HELD

### LED SEARCH LIGHT

#### APPLICATIONS



#### TECHNICAL DATA

Cat. Ref.	Wattage	Voltage	Lumens	Colour Temp	BATTERY BACK-UP	MRP
ANH-HSLWC5-1000	5	230 VAC	>600	3000-6000	UPTO 3 Hrs.	5000
ANH-HSLW10-1000	10	230 VAC	>1200	3000-6000	UPTO 3 Hrs.	6200
ANH-HSLW20-1000	20	230 VAC	>2400	3000-6000	UPTO 3 Hrs.	7800





## BATTERY OPERATED



Arya Inverter LED bulbs are good innovation where you can just lit up your space during power outage. It's backup time varies according to rating of inbuilt lithium ion battery. Normally it gives backup upto 3-4hrs. During power cuts, ARYA Inverter bulb will provide light up to 3 hours continuously, therefore being a perfect power backup for your home. 2-Fast-charging, with the automatic charging feature. Arya Inverter bulb will get automatically charged when it is kept ON, with the charging time of 8-10 hours.

## INVERTER

RECHARGEABLE AC/DC BULB

### APPLICATIONS



### TECHNICAL DATA

Cat. Ref.	Wattage	Voltage	Lumens	Colour Temp	BATTERY BACK-UP	MRP
ANLLW10-INV	10	230 VAC	>1200	3000-6000	UPTO 3 Hrs	599
ANLLW20-INV	20	230 VAC	>1440	3000-6000	UPTO 3 Hrs	799





## BATTERY OPERATED

ARYA Emergency EXIT Board operated at Power I/P AC - 230 V, 50 HZ 5% DC - 12V Housing CRCA Sheet Power Consumption 10 Watt LED & 20 Watt Weight 7 KG (With Battery) Colour White Battery Backup up to 3-4 Hour

## EXIT BOARD

RECHARGEABLE

### APPLICATIONS



### TECHNICAL DATA

Cat. Ref.	Wattage	Voltage	Lumens	Colour Temp	BATTERY BACK-UP	MRP
ANDEW10-EM	10	230 VAC	>0000	3000-6000	UPTO 3 Hrs	3000
ANDEW20-EM	20	230 VAC	>0000	3000-6000	UPTO 3 Hrs	6000







## BATTERY OPERATED

ARYA 10W-2 ft Inverter Rechargeable Cool Day Light Led Batten are good innovation where you can just lit up your space during power outage. It's backup time varies according to rating of inbuilt lithium ion battery. Normally it gives backup upto 3-4hrs. During power cuts, ARYA Inverter bulb will provide light up to 4 hours continuously, therefore being a perfect power backup for your home. 2-Fast-charging, with the automatic charging feature, Arya Inverter bulb will get automatically charged when it is kept ON, with the charging time of 8-10 hours.

## TUBE LIGHT

RECHARGEABLE

### APPLICATIONS



### TECHNICAL DATA

Cat. Ref.	Wattage	Voltage	Lumens	Colour Temp.	BATTERY BACK-UP	MRP
ANTLW10-EM	10	230 VAC	>1200	3000-6000	UPTO 3 Hrs	800





## BATTERY OPERATED



ARYA Rechargeable Cool Day Light Led Street light you can just lit up your space during power outage. LED Street light fitting SMD type is having aluminium pressure die cast housing and powder coated to withstand all Weather conditions. It's backup time varies according to rating of inbuilt lithium ion battery. Normally it gives backup upto 3-4hrs

## STREET LIGHT

RECHARGEABLE

### APPLICATIONS



### TECHNICAL DATA

Cat. Ref.	Wattage	Voltage	Lumens	Colour Temp	BATTERY BACK-UP	MRP
ANSLW30-EM	30	230 VAC	>3600	3000-6000	UPTO 3 Hrs	9000





*Add Light to Life*

# LED

## LANDSCAPE LIGHT





## POST TOP LANTERN



Arya LED Smart Post Top Lantern with aluminium die cast spigot, spun aluminium power coated top cover with clear Acrylic cover. The Smart Post Top optimized optical design increases both horizontal and vertical uniformity. The highly efficient thermal system design ensures maximum heat transfer and longer LED service life. This reliable luminaire system operates well in both low and high temperature environments. It offers more than 11 years expected life, reducing maintenance frequency and cost (based on a 50,000 hour rated life and 12 hours operation per day). It provides a comfortable and safe atmosphere to gardens, residential areas, courtyards, side streets, squares, parks & playgrounds.

### APPLICATIONS



### TECHNICAL DATA

Cat. Ref.	Wattage	Voltage	Colour Temp	MRP
ANPPTLW10	10	90-300	3000-6500	1550
ANPPTLW20	20	90-300	3000-6500	3200
ANPPTLW25	25	90-300	3000-6500	3900
ANPPTLW40	40	90-300	3000-6500	5200
ANPPTLW45	45	90-300	3000-6500	6500







## POST TOP LANTERN

### DECORATIVE

Arya Decorative LED Post Top Lantern with aluminium die cast spigot, spun aluminium power coated top cover with clear Acrylic cover. Post Top Lantern inherits the classic look and style of the previous generation with improved system efficacy and light quality. The Smart Post Top optimized optical design increases both horizontal and vertical uniformity. The highly efficient thermal system design ensures maximum heat transfer and longer



#### APPLICATIONS



#### TECHNICAL DATA

Cat. Ref.	Wattage	Voltage	Colour Temp	MRP
ANPPTLW10-D	10	90-300	3000-6500	2100
ANPPTLW20-D	20	90-300	3000-6500	3800
ANPPTLW25-D	25	90-300	3000-6500	4800
ANPPTLW40-D	40	90-300	3000-6500	6200
ANPPTLW45-D	45	90-300	3000-6500	7500





## HANGING TYPE



Arya LED hanging unique light fixture is surrounded by a garden where you can safely grow herbs or other small plants up and out of the way as well as hanging indoor. Our classic brass pendant features durable brass construction coupled with a decorative glass globe. This indoor hanging lamp can be used as a lakeside chain mount, nautical bathroom pendant or brass kitchen light.

The fitting is robust with PC / Acrylic lens cover, IP-22 and the LED driver is having unique features such as constant current, THD <10%, power factor >0.95, surge protection upto 2.5 kv, operating voltage range 100-300 VAC with instant start

### APPLICATIONS



### TECHNICAL DATA

Cat. Ref.	Wattage	Voltage	Colour Temp	MRP
ANHTLW10	10	90-300	3000-6500	1550
ANHTLW20	20	90-300	3000-6500	3200
ANHTLW25	25	90-300	3000-6500	3900
ANHTLW40	40	90-300	3000-6500	5200
ANHTLW45	45	90-300	3000-6500	6500





## BOLLARD



ARYA Bollard lights are a type of lighting fixture that is commonly used to illuminate pathways and landscapes for pedestrian use and safety. Bollard lights can illuminate walkways, parking areas, and other outdoor spaces, making them safer for pedestrians and vehicles. Enhanced aesthetics: Bollard lights can add visual interest to outdoor spaces, and can be used to highlight landscaping or architectural feature

### APPLICATIONS



### TECHNICAL DATA

Cat. Ref.	Wattage	Voltage	Colour Temp	MRP
ANBL-W10	10	90-300	AS PER CUSTOMER REQUIRED	90-300
ANBL-W15	15	90-300		90-300
ANBL-W10	10	90-300		90-300
ANBL-W15	15	90-300		90-300





## BOLLARD

### DECORATIVE

Arya bollard is a short post used to create a protective or architectural perimeter. When installed primarily as a visual guide, they guide traffic and mark boundaries. As architectural elements they come in a wide variety of shapes and styles to accentuate or visually stand out in their settings.



### APPLICATIONS



### TECHNICAL DATA

Cat. Ref.	Wattage	Voltage	Colour Temp	MRP
ANDBLT-W10	10	90-300	AS PER CUSTOMER REQUIRED	3000
ANDBLT-W10	15	90-300		4500
ANDBLT-W10	10	90-300		3000
ANDBLT-W10	15	90-300		4500







## WALL MOUNTED

Arya Wall Mounted Lights come in various shapes and sizes and are powered by an electric light source. Wall lights have applications in any room, indoors and out. Working alongside ceiling lights, a wall-mounted fixture provides supplemental illumination, while using wall lights in place of overhead lighting creates a more atmospheric effect and can alleviate glare.

As a very general rule, position your wall lights about 152cm or 60" above floor level. If you are putting wall lights in a long hallway or corridor, a general rule of thumb is to position them about 250 to 300cm or 8' to 10' apart.



### APPLICATIONS



## TECHNICAL DATA

Cat. Ref.	Wattage	Voltage	Colour Temp	MRP
ANWMW10-B22	10-23	90-300	3000-6500	3000-6900
ANWMW10-B22	10-23	90-300	3000-6500	3000-6900

Different Model Available on Demand Also.





## PATHWAY LIGHT

Decorative Lighting Poles are made by Cast Iron / FRP Poles / aluminium casted pole. We are one of the trusted firms engaged in offering a wide range of Decorative Poles Light to the patrons.



### APPLICATIONS



### TECHNICAL DATA

Cat. Ref.	Wattage	Voltage	Colour Temp	MRP
ANFTW3	3	90-300	3000-6500	900
ANFTW3	5	90-300	3000-6500	1500

Different Model Available on Demand Also.





## DECORATIVE POLES

Decorative Lighting Poles are made by Cast Iron / FRP Poles / aluminium casted pole. We are one of the trusted firms engaged in offering a wide range of Decorative Poles Light to the patrons.

Different Model Available on Demand Also.

### APPLICATIONS



### TECHNICAL DATA

Cat. Ref.	Height	Base Plate	MRP
ANCIPM3	3	200x200 mm	900
ANCIPM4	4	200x200 mm	1200
ANCIPM5	5	200x200 mm	1500
ANCIPM6	6	250x250 mm	1800
ANCIPM9	9	300x300 mm	2700





## STRIP LIGHT ROPE LIGHT



The Modern Decorative And Elegant With Low Power Consumption Lighting Need Is Solved By Strip & Rope Lighting.

These Lighting Are Easy To Install And Handle. The Overall Cost Of The Lighting In Project Is Also Low With Regard To Traditional High Wattage Light Where The Power Consumption & Prices Of Installation Is Comparatively Quite High.

The Light Are Attractive & Come In Six To Seven Colours & Can Cover Lot Of Spaces With Bright Colours.

### APPLICATIONS



### TECHNICAL DATA

Cat. Ref.	LED Type	LEDs Per Meter	Power Per Meter	Lumens Per LED	PKD	MRP
ANSRW4.8	2835	60 LED	4.8W	18LM	20	550
ANSRW9.6	2835	120 LED	9.6W	22LM	10	850
ANSRW14.8	5050	60 LED	14.8W	22LM	10	850
ANSRW19.2	2835	240 LED	19.2W	22LM	10	1500
ANSRW19.2H	2835	240 LED	19.2W	28LM	10	1950







*Add Light to Life*

# LED LIGHT

## SPARE PARTS





## DRIVERS FOR LED LUMINAIRES STREET & FLOOD LIGHT

Arya Constant Current LED driver is a self-contained power supply which regulates the power required for an LED or array of LEDs. Because they can control the electrical current, a constant current driver is best for LED down lights or high powered LEDs. A constant voltage driver is designed for LED lights that need a fixed voltage (of either 12 or 24v) but have a current that's already being regulated by another safety device, like a resistor. There are two main types of drivers, those that use low voltage DC input power (generally 5-40VDC) and those that use high voltage AC input power (generally 90-277VAC). LED drivers that use high-voltage AC power are called Off-Line drivers, or AC LED drivers.

**Potted Driver:** Potting is the filling of an area using an epoxy glue, resin, or other similar compounds to create a hard, solid barrier.

**Application:** An LED Driver can be replaced by another of the same type and specification to meet the LED luminaire requirements. Replacement of defective Drivers from Luminaires.



### TECHNICAL DATA

Power Model	Input Voltage	Output Voltage	Output Current	Efficiency	Power Factor	Surge Voltage	Size (LXWHM)
AN220v-24w	100-400v	30-40v	750mA	85%	0.965	4.5KV	103X36X25MM
AN220v-30w	100-400v	30-40v	900mA	87%	0.975	4.5KV	103X36X25MM
AN220v-38w	100-400v	30-40v	1000mA	87%	0.985	4.5KV	103X36X25MM
AN220v-40w	100-400v	30-40v	1000mA	89%	0.965	4.5KV	103X36X25MM
AN220v-40w	100-400v	50-70v	750mA	88%	0.985	6KV	103X36X25MM
AN220v-50w	100-400v	30-40v	1500mA	88%	0.955	6KV	103X36X25MM
AN220v-50w	100-400v	50-70v	750mA	88%	0.978	6KV	103X36X25MM
AN220v-50w	100-400v	30-40v	1500mA	89%	0.967	6KV	108X37X30MM
AN220v-50w	100-400v	50-70v	750mA	89%	0.985	6KV	108X37X30MM
AN220v-100w	100-400v	30-40v	2500mA	88%	0.959	6KV	120X40X30MM
AN220v-100w	100-400v	65-75v	1250mA	88%	0.988	6KV	120X40X30MM





## DRIVERS FOR LED LUMINAIRES

### PANEL LIGHT



#### TECHNICAL DATA

Power Model	Size	Model No.	Code No.	Wattage	O/P Volt	O/P Current
Model PTH1	105X35X25MM	AN-DRV-24V_36V PTH	22146-1	22-24W	30-40V	700mAmp
Model PTH1	105X35X25MM	AN-DRV-24V_36V PTH	22146-1	27-30W	30-40V	750mAmp
Model PTH1	105X35X25MM	AN-DRV-24V_36V PTH	22146-1	36-40W	30-40V	1.0Amp
Non isolated	60X30X20MM	AN-DRV-24V_36V PTH	NA	8-9W	30-50V	270mA
Non isolated	60X30X20MM	AN-DRV-24V_36V PTH	NA	12-15W	40-60V	270mA
Non isolated	75X30X20MM	AN-DRV-24V_36V PTH	NA	18-19W	70-80V	270mA
Non isolated	75X30X20MM	AN-DRV-24V_36V PTH	NA	22-24W	70-90V	270mA





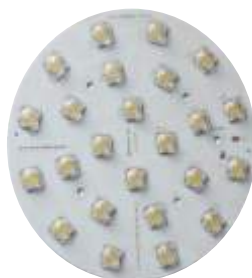


## MCPCB FOR LED LUMINAIRES & LAMPS

ARYA Metal Core PCBs or MCPCBs are the types of PCBs that contain a base metal material as opposed to the traditional FR4. The core is usually designed to redirect heat away from the components. The metal core is composed of a metal plate of a particular thickness which dissipates heat.

MCPCB available for type of Luminaires i/c Street Lights, flood Lights, High Bay Lights, well Glass lights, Search lights etc. and customised MCPCB also available.

Make of LEDs as per Buyer's Demand.



### TECHNICAL DATA

Cat. Ref.	Voltage	Operating Voltage DC	Thickness
ANMCPCBW18	18	36-40	1 to 1.5mm
ANMCPCBW24	24	36-40	1 to 1.5mm
ANMCPCBW30	30	36-40	1 to 1.5mm
ANMCPCBW36	36	36-40	1 to 1.5mm
ANMCPCBW45	45	36-40 / 60-72	1 to 1.5mm
ANMCPCBW60	60	36-40 / 60-72	1 to 1.5mm
ANMCPCBW90	90	36-40 / 60-72	1 to 1.5mm
ANMCPCBW100	100	36-40 / 60-72	1 to 1.5mm
ANMCPCBW120	120	36-40 / 60-72	1 to 1.5mm
ANMCPCBW150	150	36-40 / 60-72	1 to 1.5mm
ANMCPCBW200	200	36-40 / 60-72	1 to 1.5mm
ANMCPCBW300	300	36-40 / 60-72	1 to 1.5mm
ANMCPCBW400	400	36-40 / 60-72	1 to 1.5mm







## SPD – SURGE PROTECTION DEVICE FOR LED LIGHTS

### SPARE PART



ARYA Surge Protective Devices (SPD) are used to protect the electrical installation, which consists of the consumer unit, wiring and accessories, from electrical power surges known as transient overvoltage.

Surge Protective Devices include things like surge protective receptacles, strips and plug-in adapters for shielding computers, smart phones, gaming systems, and HDTVs from harmful transients. They're installed at the point-of-use and serve as your last line of defense in protecting your investments. Surge Protective Devices include things like surge protective receptacles, strips and plug-in adapters for shielding computers, smart phones, gaming systems, and HDTVs from harmful transients. They're installed at the point-of-use and serve as your last line of defense in protecting your investments.

### SPECIFICATION

Wide input range 100 to 300 VAC

Maximum voltage sustainable 440 VAC

Surge Test : 10 KV & 20 KV @0°, 90°, 180°, 270° with 5 Pulse Each.



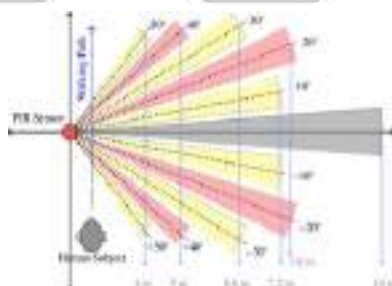


## DAY LIGHT SENSORS

ARYA Day Night Light sensors work by the photoelectric effect. Light can behave as a particle, referred to as a photon. When a photon hits the metal surface of the light sensor, the energy of the light is absorbed by the electrons, increasing their kinetic energy and allowing them to be emitted from the material.

## MOTION SENSORS

ARYA motion sensor provides added safety, security and convenience for both residential and commercial lights. Adding a light sensor doesn't require you to replace an existing light if it's in good working order. Motion sensor lights can be unpredictable. Wind, pets, and other objects might trigger the light, even when you don't want them to. So, if you're looking for a light that will stay on all the time without fail, a motion sensor light might not be the best option. This can be fitted in different light application. There is degree of angle in length of beam within which the motion movement will be detected in product will light up or light off if no movement.



**Innovation and Research**

We foster a culture of continuous innovation, encouraging our teams to explore new ideas and technologies that can enhance LED lighting efficiency, performance, and aesthetics. Our research efforts are guided by a commitment to staying at the cutting edge of the industry.

**Collaborative Design and Development**

Our product design and development process are collaborative, bringing together multi-disciplinary teams to conceptualize, design, and engineer LED lighting solutions that meet the unique needs and preferences of our customers. We emphasize feedback loops and iterative improvements to ensure superior product outcomes.

**Quality Assurance**

Quality is our cornerstone. We implement stringent quality control measures throughout the entire manufacturing process to guarantee that our LED lighting products meet and exceed industry standards. We conduct rigorous testing, quality checks, and inspections to ensure durability, efficiency, and safety.

**Sustainability and Environmental Responsibility**

We are committed to minimizing our ecological footprint. Our manufacturing practices prioritize energy efficiency, waste reduction, and responsible sourcing of materials. We constantly evaluate and improve our processes to align with sustainability goals and contribute to a greener, more sustainable world.

**Customer-Centric Approach**

Our customers are at the heart of everything we do. We listen to their needs, preferences, and challenges to tailor LED lighting solutions that address their specific requirements. We provide exceptional customer service, offering expert advice, technical support, and reliable communication throughout the customer journey.

**Strategic Partnerships and Alliances**

We actively seek partnerships with industry leaders, research institutions, and sustainable technology innovators. By collaborating with strategic partners, we leverage synergies and expertise to accelerate technological advancements, expand market reach, and drive positive change within the industry.

**Employee Development and Wellbeing**

Our employees are our greatest asset. We invest in their growth, skill development, and job satisfaction through training programs, mentorship, and a conducive work environment. We prioritize employee wellbeing and work-life balance to foster a motivated, engaged, and high-performing team.

**Adaptability and Flexibility**

The lighting industry is dynamic, and we embrace change with agility. We adapt to evolving market trends, customer expectations, and regulatory landscapes swiftly and effectively. Our flexible approach allows us to pivot, innovate, and deliver solutions that stay relevant in a rapidly evolving technological landscape.

**Community Engagement and Corporate Social Responsibility**

We actively engage with local communities and participate in corporate social responsibility initiatives. Through various programs and partnerships, we contribute to the wellbeing of the communities in which we operate, striving to make a positive impact beyond our business goals.

**Gender diversity**

we are proud to announce that our Manpower strength consists of more than 40% Naari Shakti, from operators to managers.

## CERTIFICATIONS



## CUSTOMER PROFILE

